

BLUETOOTH Adapter Kit Installation & Start-Up Guide

1. Apply the parking brake and shift the car into drive (automatic cars) or neutral (manual cars).
2. Ensure the car is OFF and then disconnect the negative terminal on the car battery.
Remove the shift knob and the surrounding trim with the shift boot. Then disconnect the two connectors beneath the trim in order fully remove it.



3. Remove the 2 screws beneath the Faceplate/AC Climate Panel, and then pull the bottom of it toward you to release it, and then remove it after disconnecting the 4 connectors behind it.



4. Remove the 2 screws below the bezel/control panel buttons. Then gently wiggle & pull it toward you to remove that section.



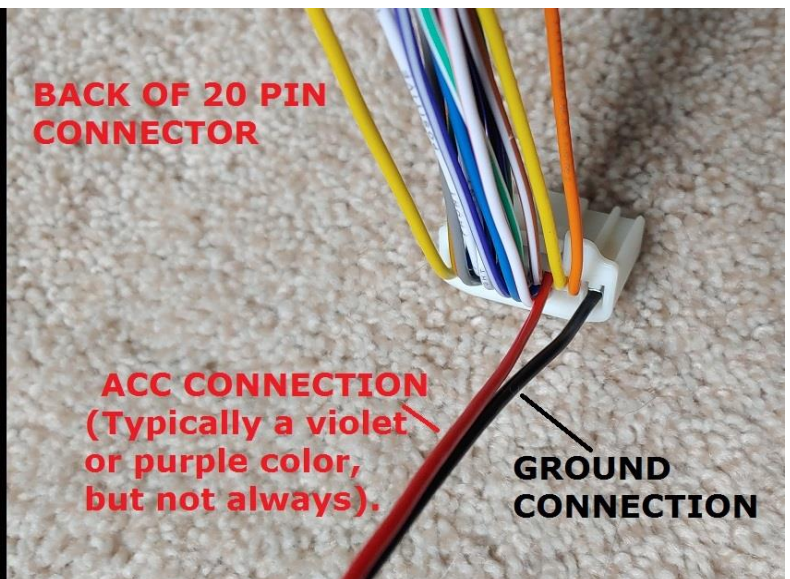
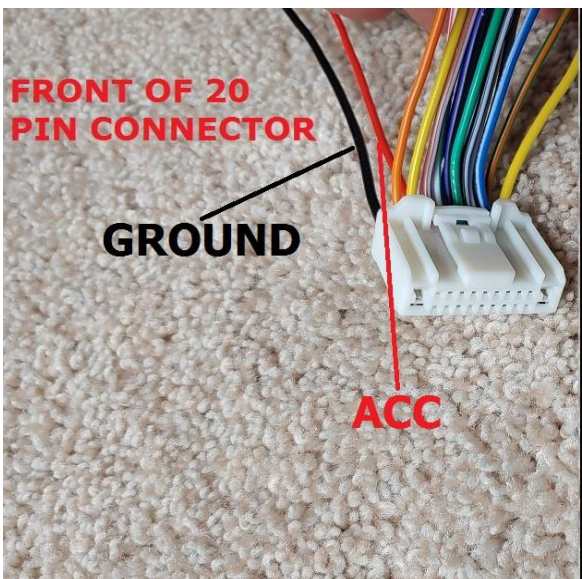
5. Remove the 2 screws on the metal brackets below the display screen and then remove the screen assembly after disconnecting the 3 connectors behind it.



6. Remove the 2 screws on the bracket below the AV/Radio unit and then pull it forward some.
7. Disconnect all of the connectors going to it, including the ones going to the A/C amp (the upper white box that sits on top of the AV unit). Make a small identifying mark on the A/C amp connectors so to not confuse them with the other connectors for the radio. Once complete, pull out the AV Unit Assembly.

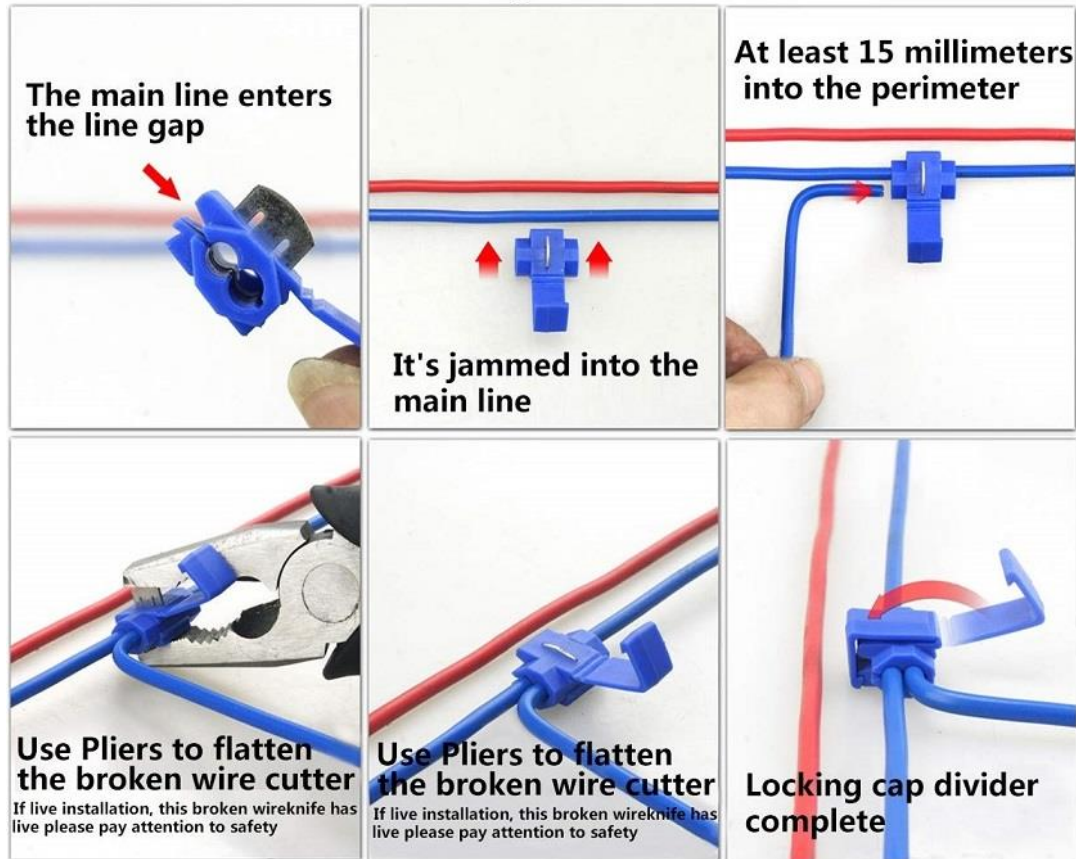


8. Find the 20-pin connector that goes to your AV Unit. **Please note the wire colors and orientation may differ than what's shown below.** In This Orientation when viewed from the Front, you can see ground wire is on the left and the ACC wire is on the top row three spaces over from the ground wire.



9. **Once properly identified**, use the included quick splice connectors to connect the Red ACC wire of the included Power Supply to the ACC wire of the 20-pin connector. And then connect the BLACK wire of the Power Supply to the Ground wire of the 20-pin connector.

Connecting method

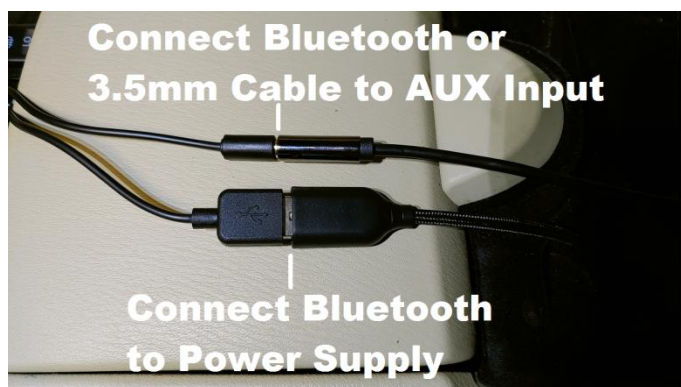


10. Now connect the adapter harness to the corresponding 12-pin factory connector and run the adapter's AUX Input cable and Power Supply cable for the Bluetooth to a location of your choice (ex. center console). Then connect the other side of the adapter harness to the AV Unit as shown.



11. Reassembly is the reverse of steps 7-1.

12. Reconnect the negative terminal on the battery. Then press the car's ignition button to ON.
13. Reset the car windows auto-up function (necessary when battery disconnected): Press and hold the window down button until the window is fully open. Release. Pull and hold the window up function for 6 seconds. Windows should now go up/down properly with the auto function. Repeat for all windows as necessary (can do two at once).
14. Once complete, simply connect the Bluetooth Unit to the AUX Input and USB Power connection and mount the Bluetooth Unit in a location of your choice to speak into the microphone and access the function keys.



15. Pair the bluetooth unit to your phone as you normally would any bluetooth and you're all set! You now have full "hands-free" control over your audio streaming, phone calls, & voice assistant, and it will automatically turn on/off/auto-connect every time you operate the car.



Congratulations. And Enjoy Your New Toy!!