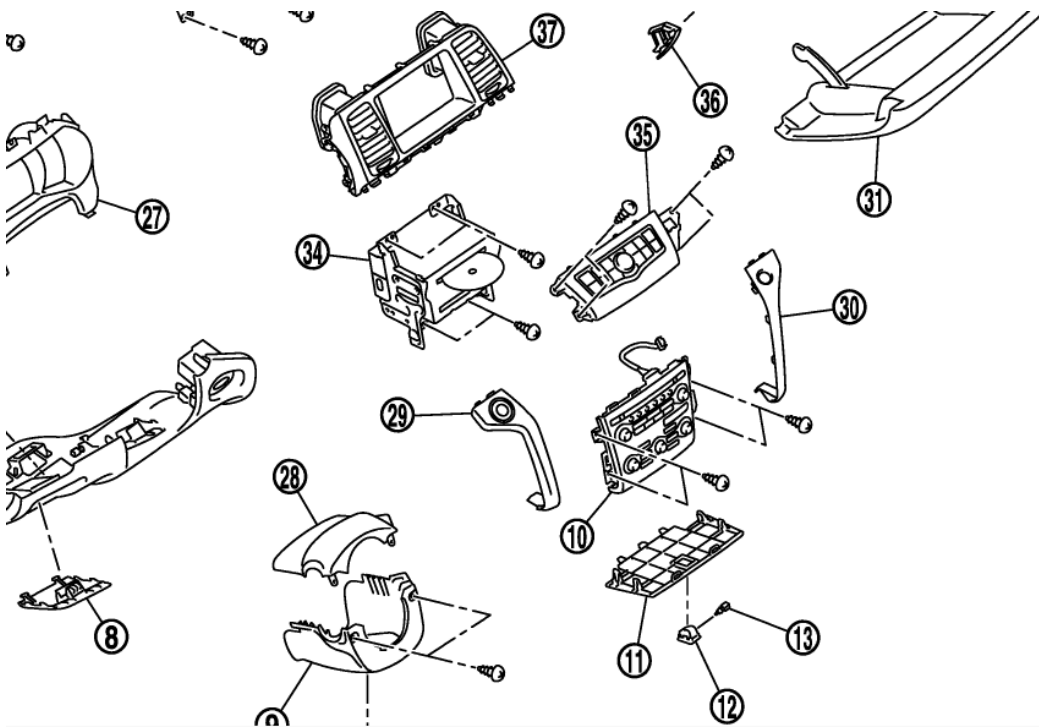


NAV Conversion Harness Kit (2009-14 MURANO)

Installation & Start-Up Guide

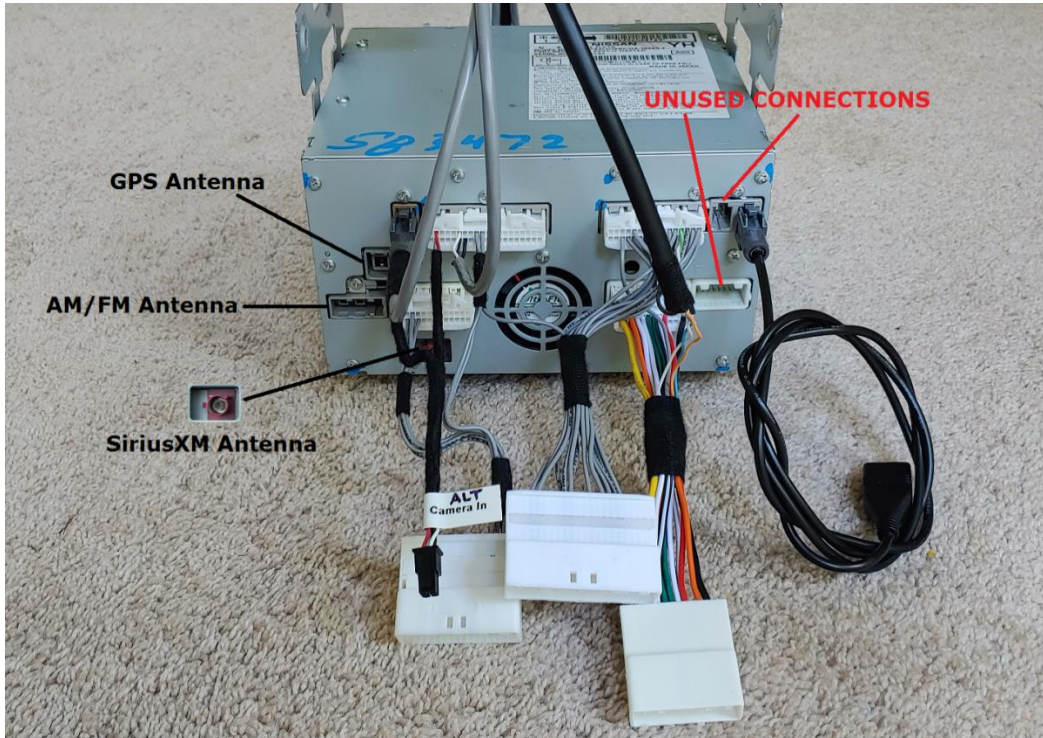
1. Apply the parking brake and shift the car into drive.
2. Ensure the car is OFF and then disconnect the negative terminal on the car battery.
3. Take the appropriate steps to remove the AV/Radio Unit. See the exploded view below or reference the video here for example: https://youtu.be/9l_uEih_SQs
 - When removing the AV Unit, disconnect all of the connectors going to it, including the ones going to the A/C amp (the white box that sits below the AV unit). Make a small identifying mark on the A/C amp connector so to not confuse it with the other connectors for the radio.



4. Once complete, pull out the old AV/Radio Unit Assembly.
5. Connect the dashboard side of the harness adapter to the factory connectors that would have gone to the original AV Unit, and then run the longer black & gray (display) cables up to where the display will connect.
6. If your kit included a GPS Antenna, Sirius XM Antenna, and/or Mic Cable you can run those now. The GPS/SirisuXM antenna(s) can be installed in a suitable location of your choice, but temporarily removing the center speaker (if equipped) on the dashboard and installing them in front of it is a nice/easy spot. Or, when running the mic cable, installing the antenna(s) on the ceiling somewhere between the map lights & rear view mirror is another alternative.

The mic cable can be run to the overhead mic, across the headliner, down through the passenger (or driver) side A-pillar, and over to the harness adapter's Mic Input connection.

7. 2009-10 vehicles only: Run the USB Input cable (and any extension/panel mount cable if purchased separately) to a location of your choice, like the center console.
8. If needed, prepare the 2011+ NAV Unit so the mounting bracket and A/C Amp are installed like the original unit. Also prepare the 2011+ display with the mounting bracket if needed.
9. Now bring the 2011+ NAV Unit into place. Connect the A/C amp (marked in step-3) and all of the radio side connections. Example:



10. Temporarily push the NAV Unit into place and connect the 2011+ NAV Display to the harness adapter.



11. Temporarily mount the new display and then connect the 2011+ Control Panel Buttons and Faceplate/AC Climate Panel in order to quickly test everything.
12. Reconnect the negative battery terminal. Press the car's ignition button to the ON position to power everything up. You should be greeted with a new and improved look!!



13. Push the radio volume on/off button and ensure that the radio itself is OFF, in order to run a Self-Diagnosis and allow the NAV Unit to see the features of your car.
14. **To do so:** Press and hold the SETTING button on the control panel while turning the volume knob to the right anywhere from 3 to 20 times. That will take you to the System Diagnostic Menu.
15. Go to Self Diagnosis and the system will scan you car's components, and once complete it will show you what it found.
16. You can then go BACK, and go to Confirmation Adjustment > Camera > Camera Syst Type, and choose the camera setup you have. Then BACK all the way out of the System Diagnostic Menu. The system will reboot and take you back to the regular screen.
17. Now put the car in reverse (don't start car) to ensure the camera works as expected.
18. Once testing is complete, go ahead and button everything up properly with the screws and all. The reverse of Steps 6 – 1.
19. Reset the car windows auto-up function (necessary when battery disconnected): Press and hold the window down button until the window is fully open. Release. Pull and hold the window up function for 6 seconds. Windows should now go up/down properly with the auto function. Repeat for all windows as necessary (can do two at once).

Congratulations. Enjoy Your New Toy!!